



GILLISS OIL TOOLS



The "Bulldog Clamp"

The Bulldog Clamp allows rig hands to pick up and lay down tubulars quickly and safely.

The patented design uses a cam to close and positively lock the clamp around the pipe. The safety lock keeps it closed, even when there is no tension on the lifting line. When the winch line is slack, pulling the handle on the safety lock releases the clamp.

Using the workover/service rig's winch line means no more lifting pipe by hand. The result is an efficient, quick way to pick up and lay down pipe without having to use nylon slings or back-breaking labor.

www.gillissoiltools.com



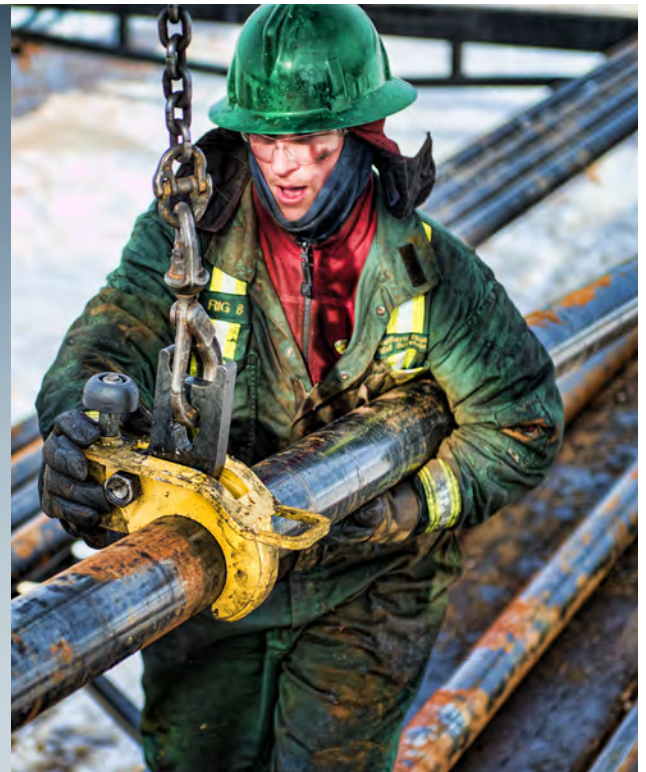
"We use the Bulldog Clamp to pick up 4-1/2 and 3-1/2 inch pipe. It's quite the tool. It is like having another two guys on the rig. It takes away from a guy having to lift up the pipe. There's no risk of hurting anybody. It's always secured to a winch.

"It's heavy pipe. It takes two guys, for sure, to be able to pick it up and move it up to the headache rack of the catwalk and to be able to maneuver it up to the floor. If we can take away from that problem, and not have to worry about guys being hurt, we're fully willing to use it.

"If we didn't have this, we would use a winch with a cloth sling. The tool is definitely quicker, absolutely. Once you get the hang of it and get a guy trained on it, it definitely cuts down on the time."

– Clint Law, Driller for Southern Range Well Servicing Rig 8

• All sizes in stock
• Available for immediate delivery



www.gillissoiltools.com

See the Bulldog Clamp in action at youtube.com/user/gillissoiltools

Proudly made in Canada



Photos and design by Brian Zinchuk Publishing
www.zinchuk.ca. Printed in Canada



Available in:
4-1/2 in.
3-1/2 in.
2-7/8 in.
2-3/8 in.